



Welcome to PSS, Wexford



CONTINUED INTENTION TO ENROL.

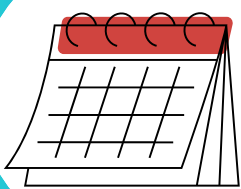
Incoming First-Year Parents

- We would be grateful if you could advise the school if you decide to enrol your child, in a different school.
- This will allow us to efficiently direct the available resources to the students who will be joining us in late August



TRANSITION TO POST PRIMARY SCHOOL

- There will be an information evening for Parents/Guardians on 11th September – Concert Hall – 6.00pm
- Planet Youth have created these resources for parents of 6th class students. [Here](#)



SCHOOL CALENDAR/ START DATES

- 27th Aug 1st year Assembly – Concert Hall 9.00-11.00am
- 29th Aug: 1st Year Induction – Sports Hall 9.00 – 14.00 iPad, PE Gear, packed lunch
- Our school calendar can be accessed [Here](#)



INDUCTION INFORMATION

- Our induction Pack that was sent to all students can be found [Here](#)
- School Policies can be found [Here](#)



UNIFORM

- The School Uniform Policy is an integral part of our Code of Behaviour. All pupils are expected to come to school in the proper uniform.
- Uniform essentials can be found [Here](#)



SCHOOL MAP

- Time will be dedicated on the induction day for students to familiarise themselves with the building layout.
- A map of our school can be found [Here](#)



FIRST YEAR INDUCTION.

Incoming First-Year Parents

- We would be grateful if you could advise the school if you decide to enrol your child, in a different school.
- This will allow us to efficiently direct the available resources to the students who will be joining us in late August

THE SCHOOL DAY

- School starts at 8.50am each day and the last class ends at 15:50 pm Monday & Tuesday. School finishes at 15.00pm Wed, Thurs & Fri
- Details of the structure of the school day can be found [Here](#)

BOOK LIST / SCHOOL EQUIPMENT/IPAD INFORMATION

- Booklist and stationery requirements can be found [Here](#)
- iPad information about books & Wriggle Store can be found [Here](#)

STUDENT ABSENCES

- If your child is absent from school or needs to leave early, details of the absence must be recorded using the VShare App.
- Parents will be issued with access codes for VShare in August.
- Please note students **MUST** be collected from school for appointments or if ill.
- If you have any issues accessing VShare please email generaloffice@preswex.ie

STUDENT EMAILS / OFFICE 365 & TEAMS

- Our school will create school email addresses for each student when they start in late August.
- Teams accounts will also be created in August

CONTACT/FURTHER INFO

- If you wish to contact us, email generaloffice@preswex.ie
- We will make every effort to respond to your query promptly and support you in any way we can.
- Further information <http://www.preswex.ie>